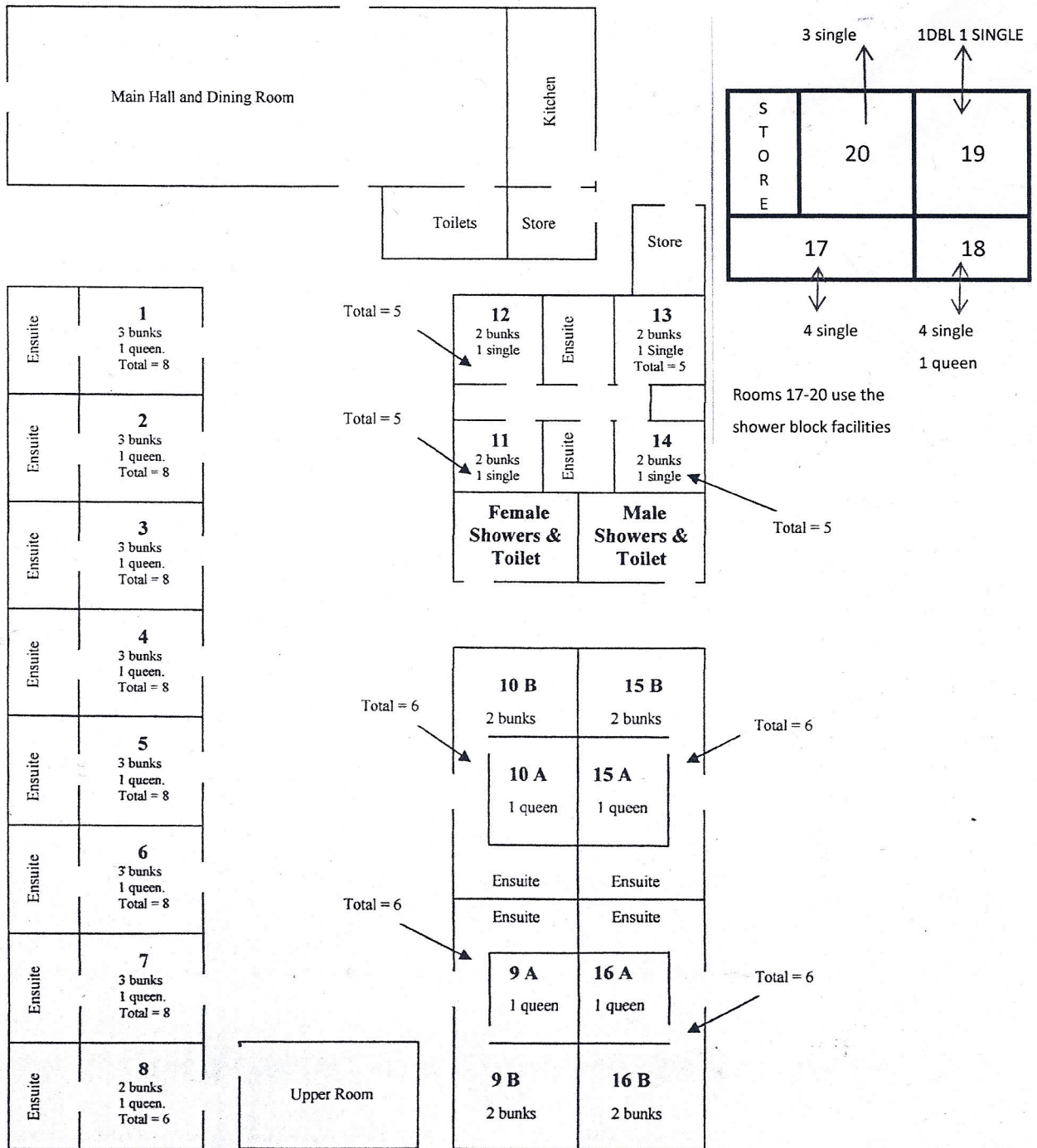
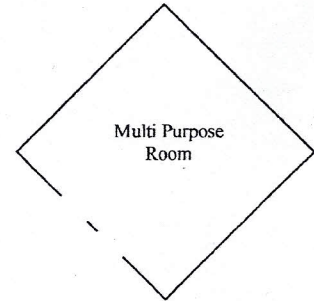
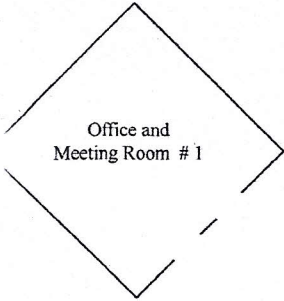


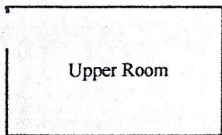
# BUILDING LAYOUT

Not to Scale.  
Room numbers are in bold

**PLEASE NOTE: You are entitled to 1 room for every 4 people you have. You may however pay for extra rooms if required.**



Ensuite	<b>1</b> 3 bunks 1 queen. Total = 8
Ensuite	<b>2</b> 3 bunks 1 queen. Total = 8
Ensuite	<b>3</b> 3 bunks 1 queen. Total = 8
Ensuite	<b>4</b> 3 bunks 1 queen. Total = 8
Ensuite	<b>5</b> 3 bunks 1 queen. Total = 8
Ensuite	<b>6</b> 3 bunks 1 queen. Total = 8
Ensuite	<b>7</b> 3 bunks 1 queen. Total = 8
Ensuite	<b>8</b> 2 bunks 1 queen. Total = 6



**NOTE:**  
Room 8 is suitable for people with disabilities